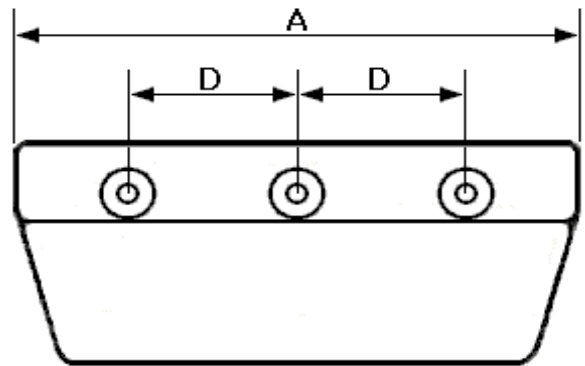
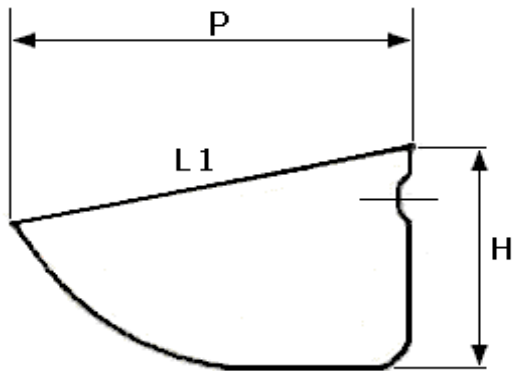


ASTRA

COLON 8201 - LA CISTERNA - F 2 - 2 547 13 95 FAX 2 527 42 79
 ventas@astra.cl - www.astra.cl - R.U.T. 77.201.980-7

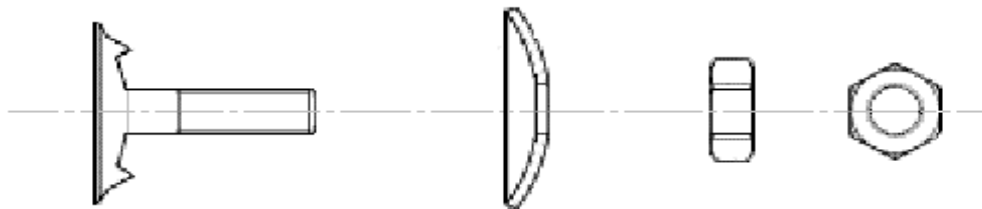


CAPACHOS METÁLICOS

TIPO	ANCHO A mm	PROYECCIÓN P mm	ALTO H mm	Paso D mm	PERNOS	CAPACIDAD L1 en LITROS	CAPACHOS X m(max.)
EUSS 10-90	106	90	62	50	1/4"	0,30	14
EUSS 13-120	140	115	78	70	1/4"- 5/16"	0,60	12
EUSS 18-140	188	140	92	100	5/16"	1,30	10
EUSS 23-165	240	165	110	120	5/16"-3/8"	2,25	9
EUSS 28-165	290	165	110	3x80	3 x 3/8"	2,90	9

CAPACHOS POLIETILENO ALTA DENSIDAD (PLÁSTICO)

EUP 10/90	4x3	107	91	62	50	1/4"	0,33	14
EUP 13/120	5x4	140	115	80	70	1/4"- 5/16"	0,70	11
EUP 18/140	7x5	188	144	92	100	5/16"	1,25	10
EUP 23/165	9x6	240	172	110	120	5/16"-3/8"	1,60	8,5
EUP 28/165	11x6	290	174	110	3x80	3 x 3/8"	2,25	9
EUP 30/180	12x7	312	182	123	3x80	3 x 3/8"	2,90	9



PERNOS CAPACHO CINCADO CON TUERCA, GOLILLA PLANA O CONCAVA

MEDIDA	DIAMETRO CABEZA mm
1/4 X 1" (6X 25mm)	20
5/16 X 1" (8X 25mm)	25
5/16 X 1 1/2" (8X 38mm)	25
3/8 X 1 1/2" (10X38mm)	35